

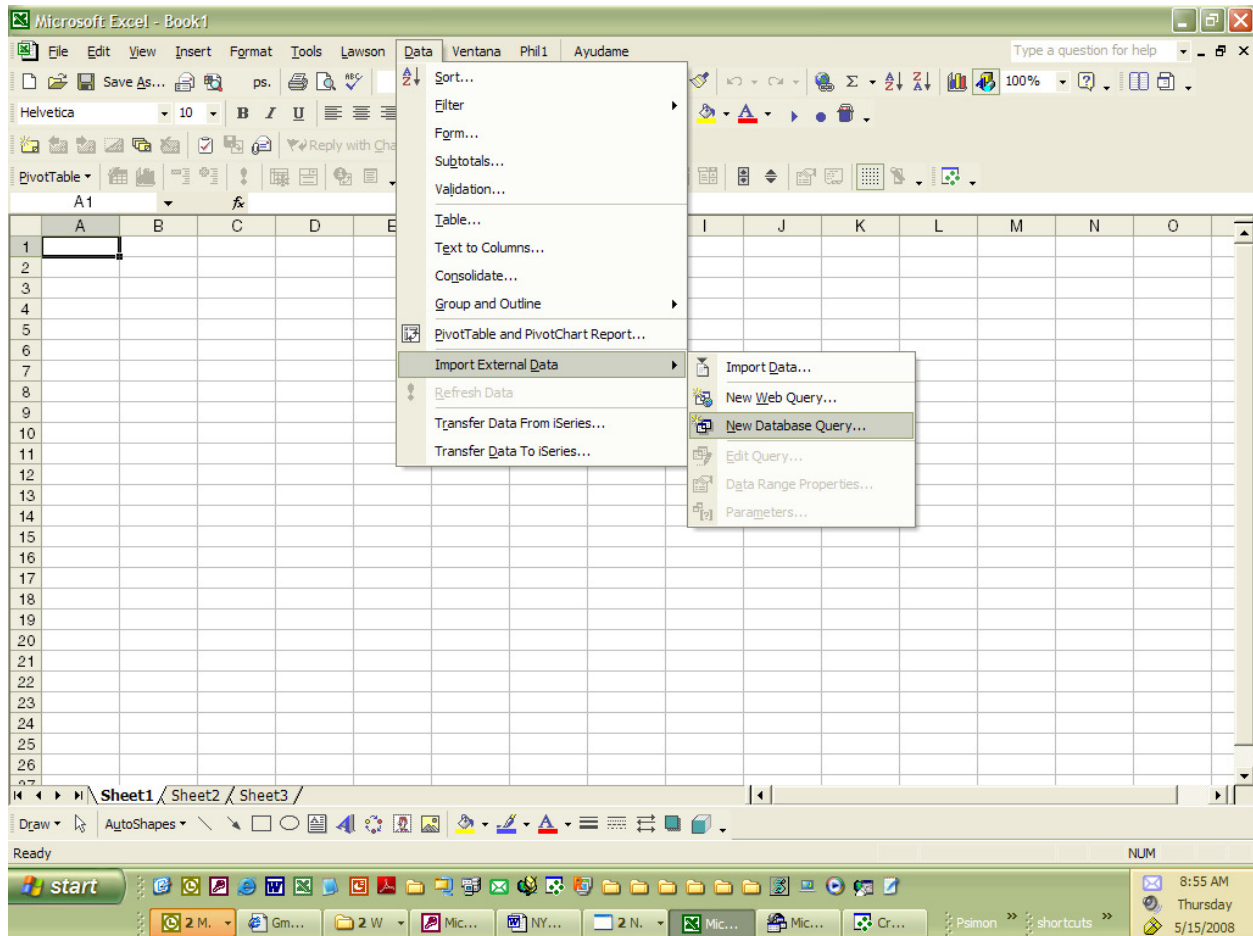
Contents

A TRICK FOR CREATING COMMANDS AND SQL	ERROR! BOOKMARK NOT DEFINED.
EXAMPLE: ONLY PULLING STATUS VALUES FROM HRHISTORY	3
CONCLUSION	11

Introduction

You can certainly add a command in Crystal Reports by typing in SQL. You cannot, however, simply copy SQL created in Microsoft Access into a command because Access' SQL is of the Jet SQL variety and Crystal will not recognizes it.

Here's a very useful trick if you like to visualize the tables involving MS Excel using Database Query functionality.



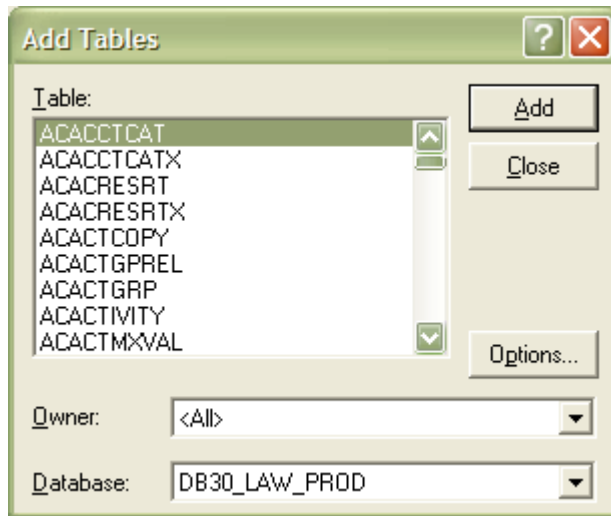
Select the product line on which you wish to report.



You will then be prompted for your user name and password:



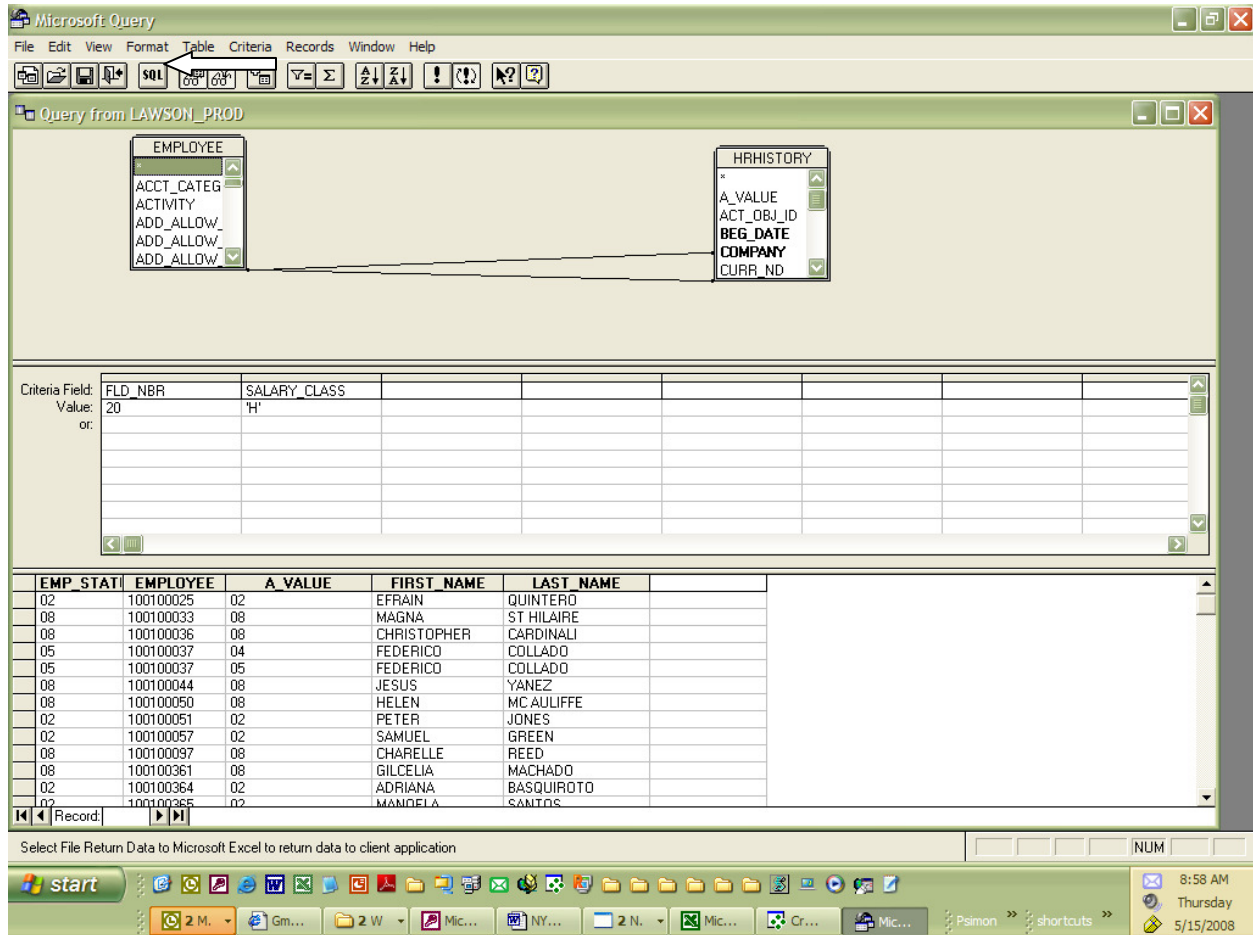
Select the table(s) that you wish to use in your Crystal Report.



Example: Only Pulling Status Values from the HRHISTORY Table

In this example, we would like to write a report pulling hourly associates' previous status values from HRHISTORY (a very large table).

The aforementioned Database Query functionality, you can join the appropriate tables and add a filter for FLD_NBR = 20 (status) as follows:



Clicking on the SQL button gives you the following code:

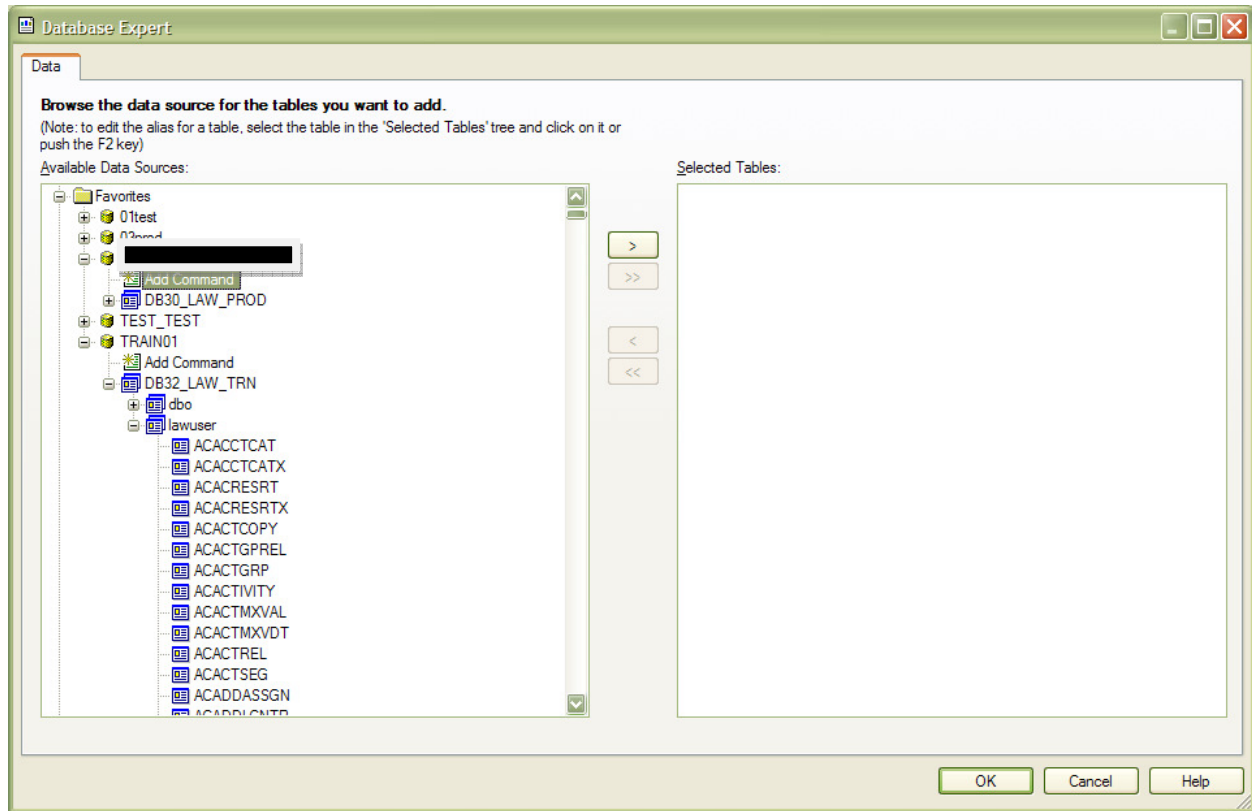
```
SELECT EMPLOYEE.EMP_STATUS, EMPLOYEE.EMPLOYEE, HRHISTORY.A_VALUE,
EMPLOYEE.FIRST_NAME, EMPLOYEE.LAST_NAME
```

```
FROM DB30_LAW_PROD.lawuser.EMPLOYEE EMPLOYEE, DB30_LAW_PROD.lawuser.HRHISTORY
HRHISTORY
```

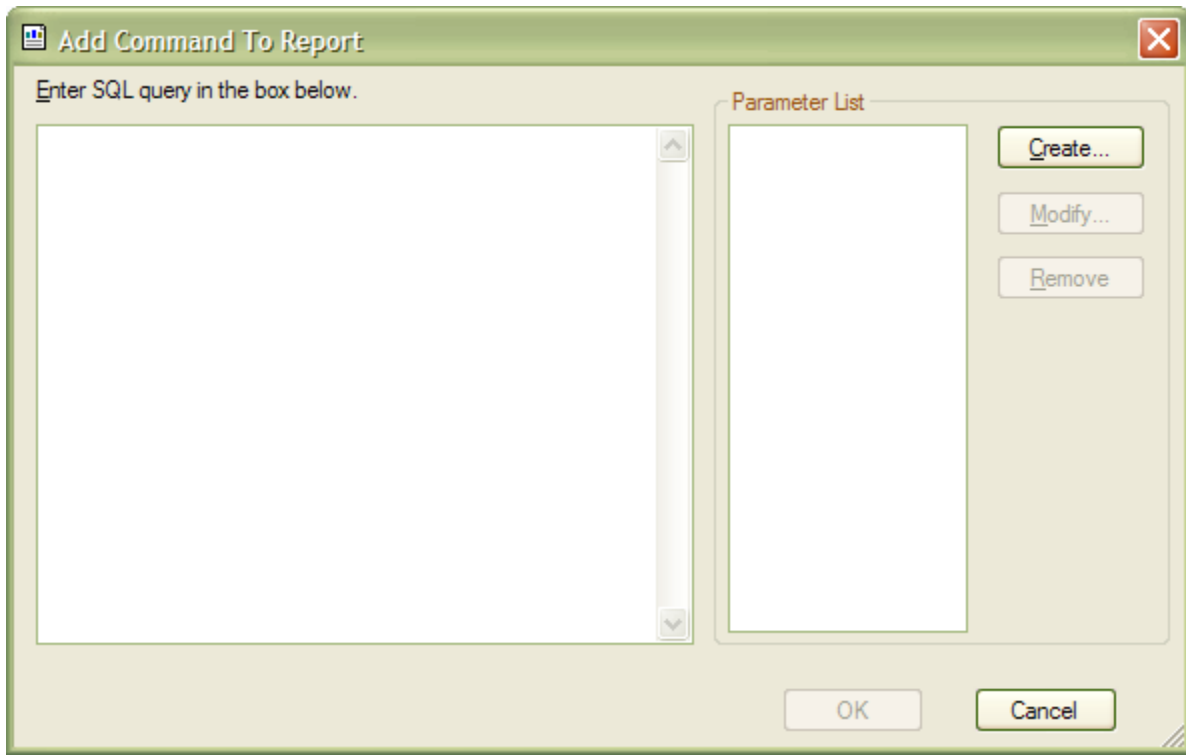
```
WHERE HRHISTORY.COMPANY = EMPLOYEE.COMPANY AND HRHISTORY.EMPLOYEE =
EMPLOYEE.EMPLOYEE AND ((HRHISTORY.FLD_NBR=20) AND (EMPLOYEE.SALARY_CLASS='H'))
```

We are now going to paste this code into a Command in a new Crystal Report.

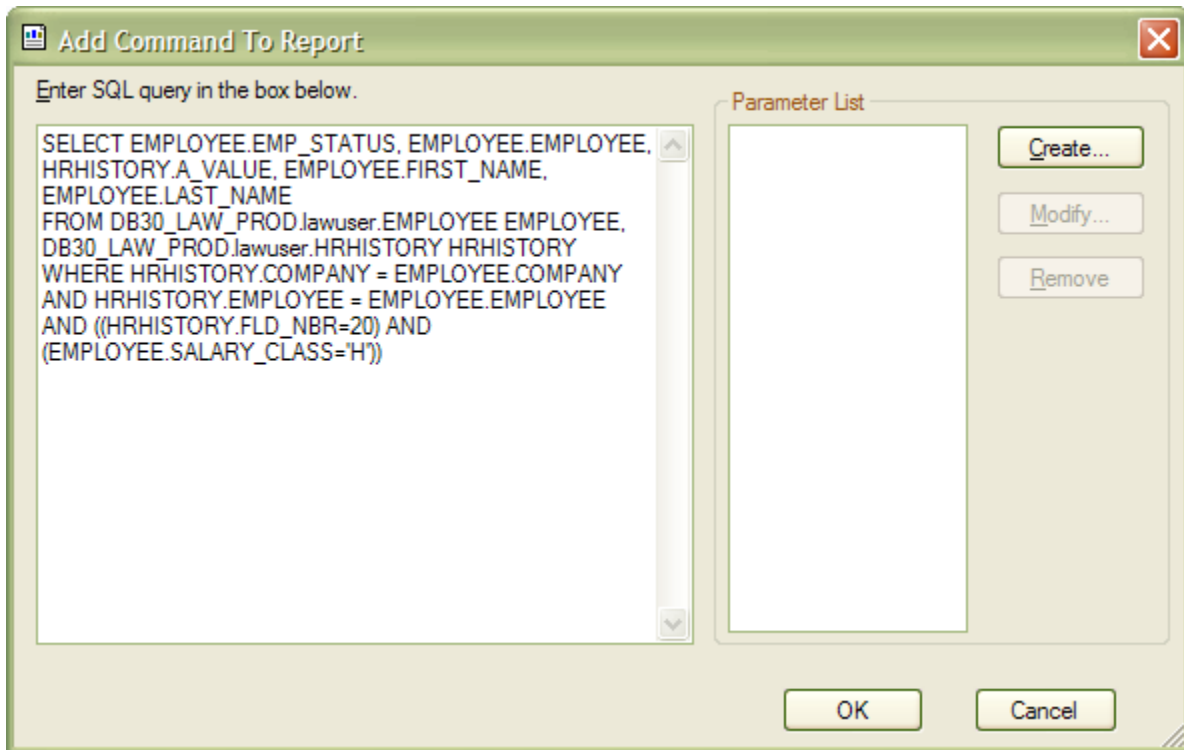
In the Database Expert in Crystal, see below:



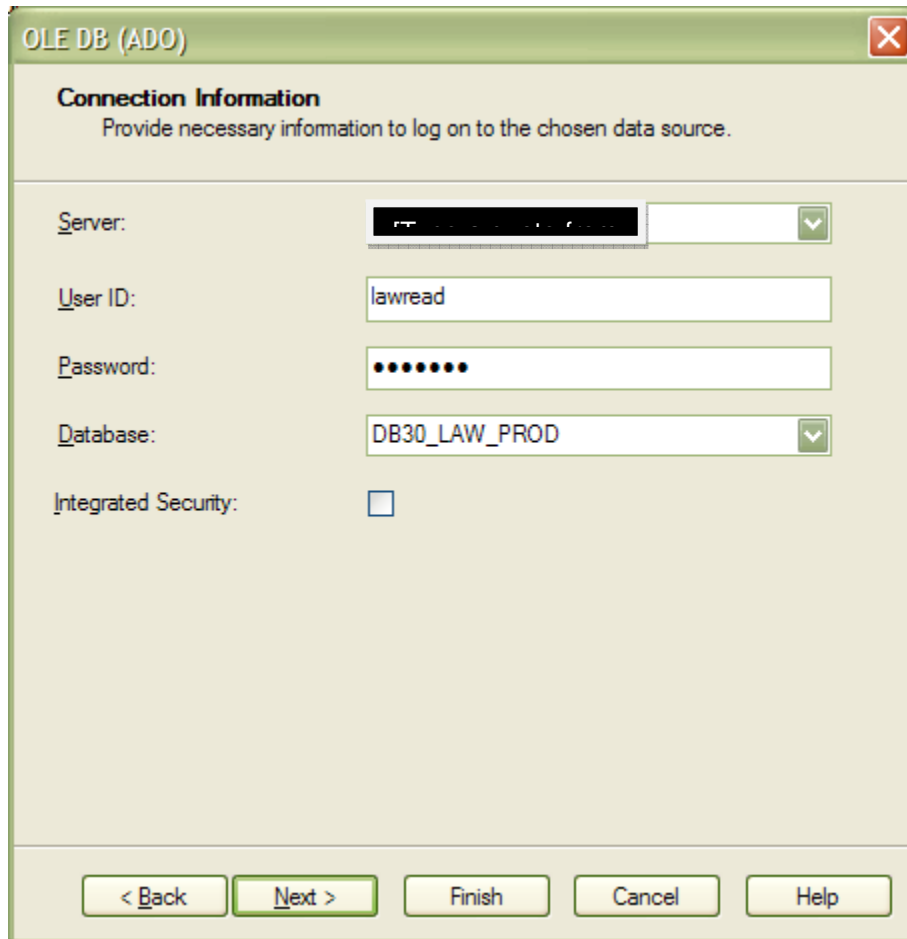
Clicking Add Command gives us this:



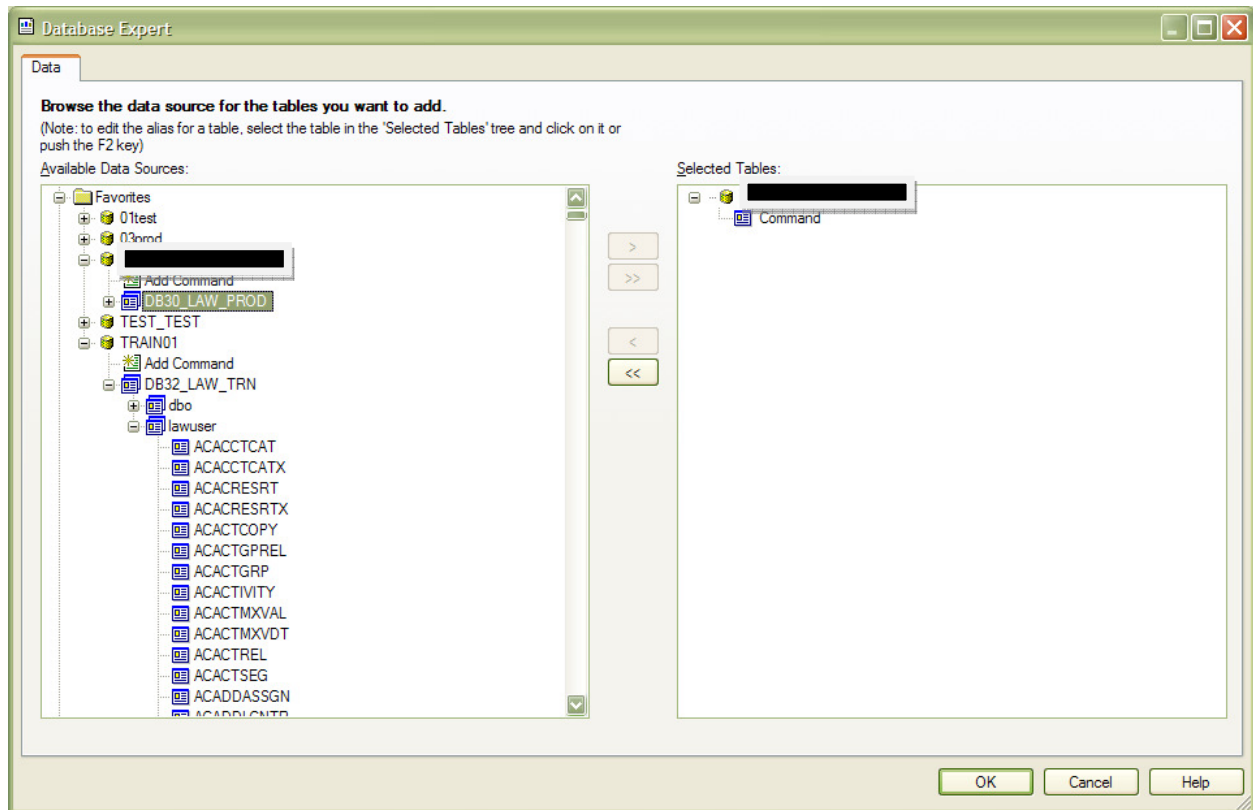
Paste the previously-created code into the command:



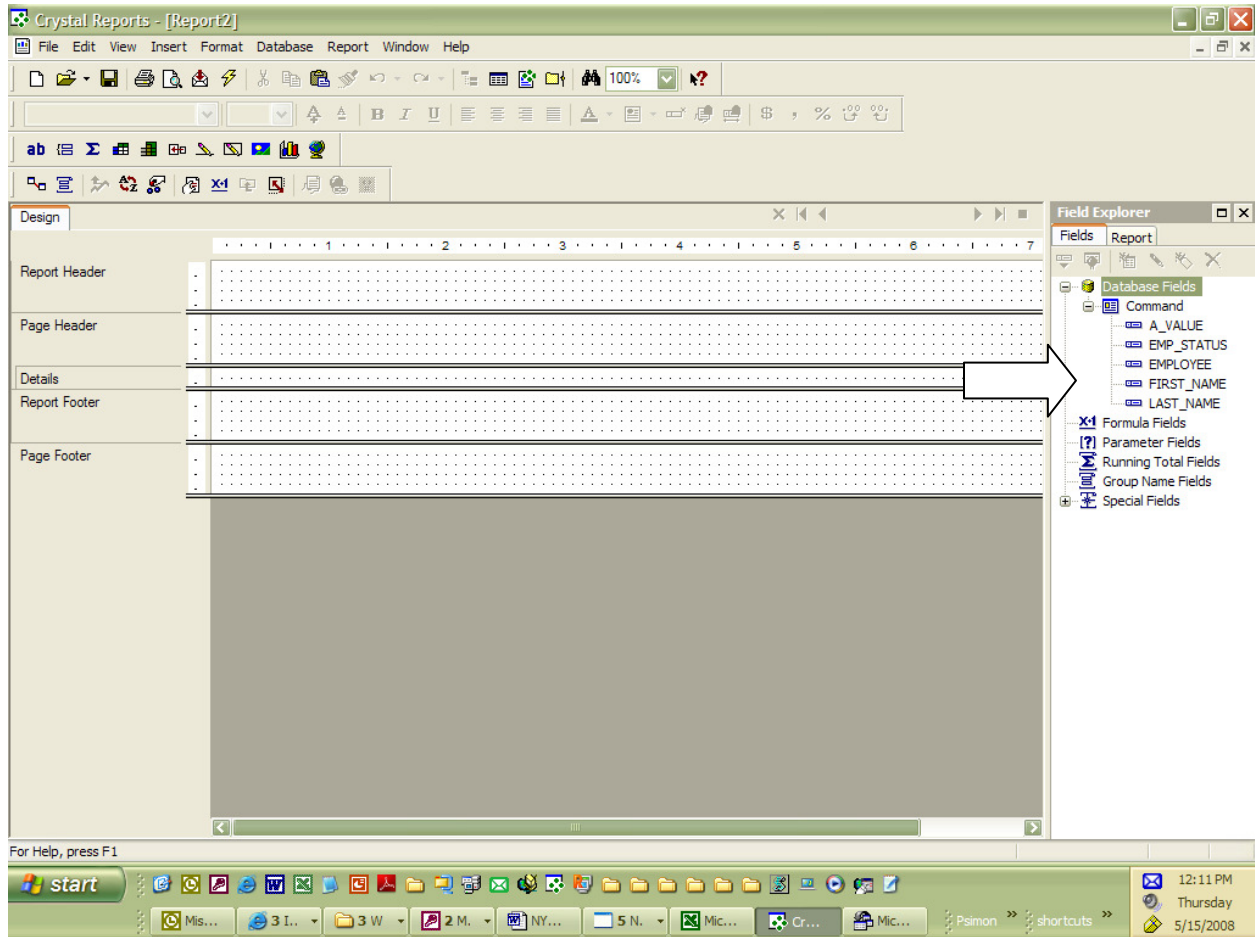
Click OK and you will be prompted for authentication:



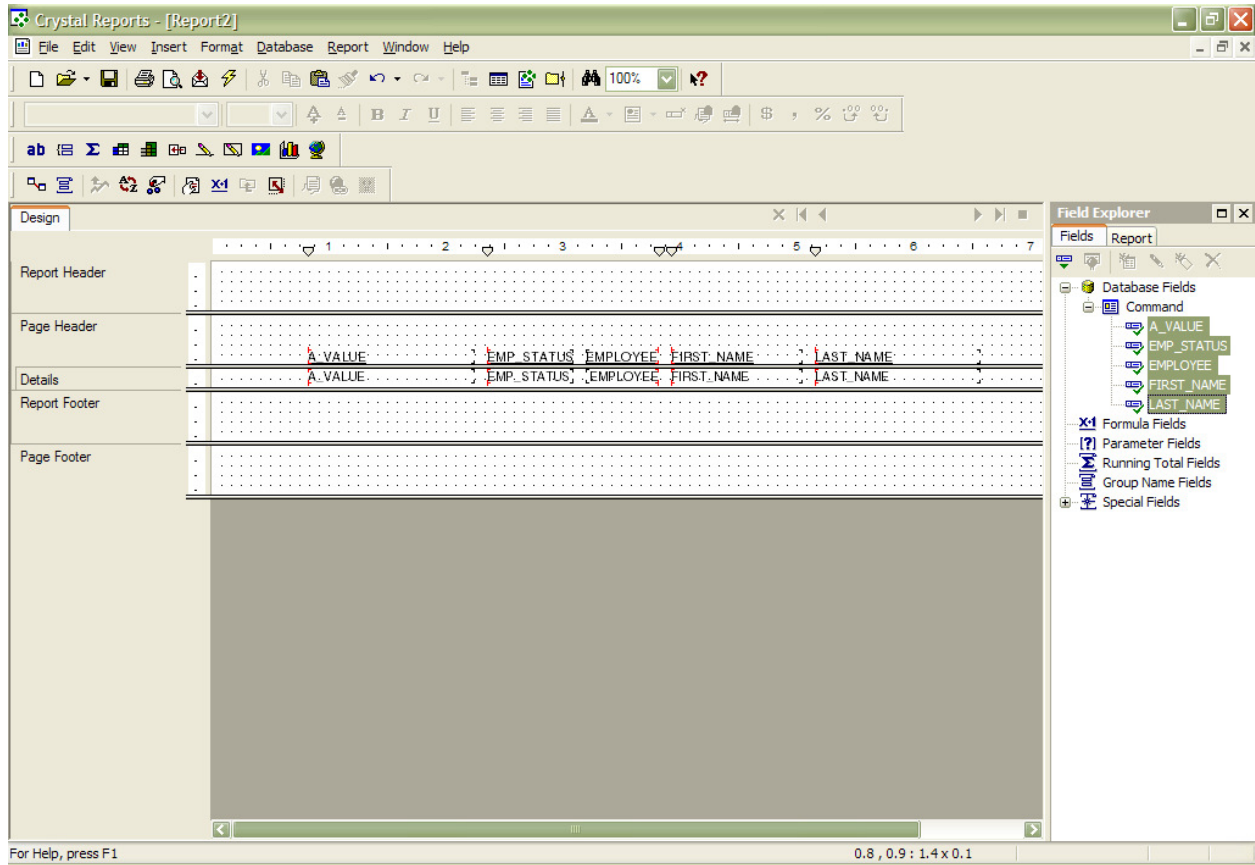
Your command now appears in Crystal:



Going to the report design view, you can see the fields selected in the Excel Database Query:



Now, we select the fields, as follows:



Running the report now gives us the data with superior performance (ignoring the “non-status” values).

Conclusion

Use this trick if you would like to significantly decrease the amount of time required to run reports from very large tables and you don't know how to code in proper SQL.